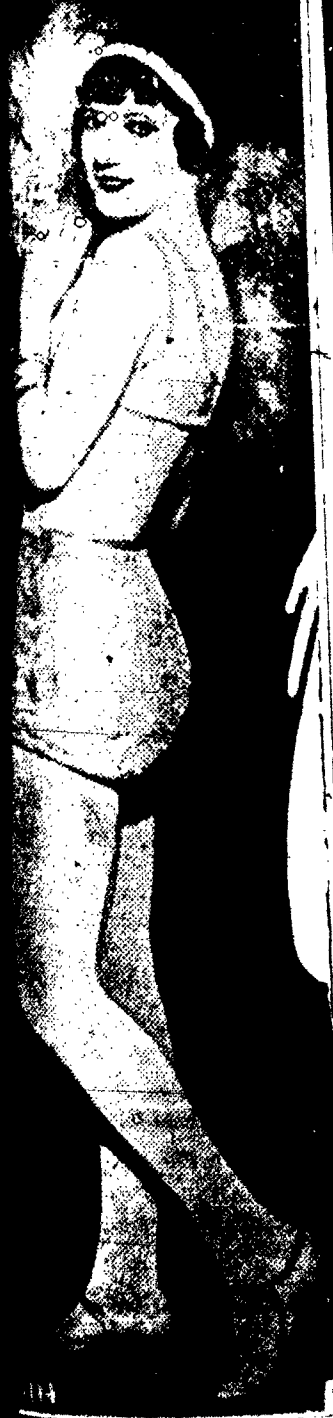


# Settling the Sage

By G. Evarts

lendid story of cattle country; of action, adventure, gun play, rustling, the hunt up, and romance. Cal Harris, the hero; Willie Warren, the heroine; Slade, the villain, and many others take part in this epic of ranch life.

Read it as a Serial in the NORTH COUNTRYMAN beginning Next Week Eugene Mate



## CHAZY

Chazy, Nov. 8.—The Ladies of the Chazy Presbyterian Church will hold their annual sale and supper Friday evening, Nov. 9. Supper will be served at 8 o'clock. Fancy articles suitable for Christmas and other gifts will be on sale as well as books, candy and surprise packages for the children.

D. K. Evans will soon move into the Hubbell house for the winter. John LaChambre, of Cohoes was a recent visitor in the village. The boys had quite a time Halloween and some rather old boys wish they had left some of the mail boxes in their old stands.

Mrs. Edith B. Heaton and daughter, Mrs. Emerson Saxe, started for New York by auto on Tuesday for a short stay in that city.

The greatest sale in the history of Rouses Point. See Pearl's advertisement in this issue.—Adv.

SUBSCRIBE FOR THE NORTH COUNTRYMAN

## NEW DEPARTMENT AT ROSEMYER & DANN'S

In celebration of the opening of an upstairs bargain department in the Rosemyer & Dann store in Rouses Point, this concern is conducting a 19c sale which started this morning and which is to continue for one week in which merchandise throughout the establishment has been greatly reduced in price. The new bargain department is stocked with new goods which have recently come in which are being offered at 19c as a special inducement for people to climb the short flight of stairs and become acquainted with the values offered by the local concern.

## ROUSES POINT LOCALS

The Women's Guild of Christ Episcopal Church in Rouses Point will hold a rummage sale at the Holland House on Tuesday, Wednesday and Thursday of next week.

Mrs. A. Dann entertained the girls of Westminster Gullid and

their friends at a Halloween party the night of the 31st. About twelve guests were present and appropriate games and prizes were enjoyed.

Mr. and Mrs. E. J. Wheeler of Westmore, Vt. Mrs. Howard Taylor and Miss Betty Taylor of Orleans, Vt. were Sunday visitors at the home of K. H. Wheeler.

# FERRY "ROOSEVELT"

## Plattsburgh to Burlington

The Direct Route to the White Mountains and All Points in New England

— VIA —

CUMBERLAND HEAD and GRAND ISLE CONTINUOUS SERVICE — 7 A. M. TILL DARK

### Rates:

\$1.00 per Car

25c per Passenger

THE WORLD HAS A NEW AND FINER MOTOR CAR

# ..and in OCTOBER

# 10,166 more cars

## than last October

# A landslide for the NASH '400'!

**N**ASH "400" sales figures tell how emphatically and overwhelmingly America has endorsed this new and finer motor car.

In July, 2916 more cars than any July in Nash history—in August, 4498 more than any previous August—in September, 6176 more than the best previous September —and in October, 10,166 more

*Nash cars than last October!*

The circle of Nash owners—the circle of "400" satisfaction and enthusiasm—is growing every month, every day, every hour—because the money never bought so fine a motor car before!

Before you buy your new car, drive the "400." Let performance show you why America has gone Nash!

9 Sedans from \$970 to \$2126, delivered      8 Coupes, Cabriolets, Victorias from \$970 to \$1911, delivered

# NASH '400'

*Leads the World in Motor Car Value*

### IMPORTANT "400" FEATURES—NO OTHER CAR HAS THEM ALL

- |                                                                 |                                       |                                              |                                            |
|-----------------------------------------------------------------|---------------------------------------|----------------------------------------------|--------------------------------------------|
| Twin-Ignition motor                                             | Salon Bodies                          | 7-bearing crankshaft (below crank pin)       | Short turning radius                       |
| 12 Aircraft-type spark plugs                                    | Aluminum alloy pistons (Inner Struts) | Bijur centralized chassis lubrication        | Longer wheelbases                          |
| High compression                                                | New double drop frame                 | Electric clocks                              | One-piece Saloon fenders                   |
| Houdaille and Lovejoy shock absorbers (exclusive Nash mounting) | Torsional vibration damper            | Exterior metalwork chrome plated over nickel | Clear vision front pillar posts            |
|                                                                 | World's easiest steering              |                                              | Nash Special Design front and rear bumpers |

## TODD-NASH COMPANY

PLATTSBURGH

NEW YORK

Associate Dealer—F. G. HOAG—Rouses Point, N. Y.