

ARTS & ENTERTAINMENT

Coming Attractions

Performances/ On Stage

Annle

The irrepressible comic strip heroine comes to life in the beloved musical, Thursday and Friday, Nov. 9-10, 8 p.m.; Saturday, Nov. 11, 3 and 8 p.m.; Sunday, Nov. 12, 2 p.m.; Wednesday, Nov. 15, 7 p.m. \$78 and \$73. John W. Engeman Theater, 250 Main St., Northport. (631) 261-2900 or www.engemantheater.com.

Peter and the Starcatcher

The award-winning play, a prequel to Peter Pan, presented by Adelphi University Dept. of Theatre, Thursday and Friday, Nov. 9-10, 7:30 p.m.; Saturday Nov. 11, 2 and 7:30 p.m.; Sunday, Nov. 12, 2 p.m. \$25 Adelphi University Performing Arts Center, 1 South Ave., Garden City. 877-4000 or aupac.adelphi.edu.

Rodrigo Y Gabriela

The Mexican classical guitar duo in concert, Thursday, Nov. 9, 8 p.m. \$64, 49.50 and \$39.50. The Space, 250 Post Ave. Westbury. (800) 745-3000 or www.ticketmaster.com or www.thespaceatwestbury.com.

A Midsummer Night's Dream

A new take on Shakespeare's comedy, Friday and Saturday, Nov. 10-11 8 p.m.; Sunday, Nov. 12, p.m. \$22, \$20 students and seniors Friday and Sunday. Merrick Theatre & Center for the Arts, 2222 Hewlett Ave., Merrick. 868-6400 or www.merrick-theatre.com.

The Clean House

Sarah Ruhl's acclaimed quirky satire on social class, presented by Hofstra University's Dept. of Drama and Dance, Friday and Saturday, Nov. 10-11, 8 p.m.; Sunday, Nov. 12, 2 p.m.; Thursday, Nov. 16, 8 p.m. \$10. Hofstra University's Joan and Donald Schaeffer Black Box Theater, South Campus, Hempstead. 463-6644 or www.hofstratickets.com.



Frankie Valli and The Four Seasons

The rock 'n roll icon in concert, Friday and Saturday, Nov. 10-11, 8 p.m.; Sunday, Nov. 12, 6 p.m. \$199.50, \$99.50, \$84.50, \$69.50, \$59.50. NYCB Theatre at Westbury, 960 Brush Hollow Rd., Old Westbury. (800) 745-3000 or www.livenation.com.

Jessie's Girl

The acclaimed tribute band performs its "Back to the Eighties" show, Friday, Nov. 10, 8 p.m. \$30, \$25, \$15. The Paramount, 370 New York Ave., Huntington. (800) 745-3000 or www.ticketmaster.com or www.paramountry.com.

Hofstra Symphony Orchestra

Adam Glaser directs the orchestra in a program of varied works, Saturday, Nov. 11, 8 p.m. \$10, \$8 seniors and students.



Bettye LaVette

The great lady of soul visits the Landmark on Main Street stage, on Saturday, Dec. 16, at 8 p.m. This intimate show, featuring Alan Hill on keyboards, allows her voice to be the complete center of attention. LaVette performs songs from throughout her 55-year career, including tunes that she used to perform in small Detroit clubs before her 21st century resurgence began. Tickets are \$40, \$35 and \$30; available at 767-6444 or www.landmarkonmainstreet.org. Landmark on Main Street, Jeanne Rimsky Theater, 232 Main St., Port Washington.

Hofstra University, John Cranford Adams Playhouse, South Campus, Hempstead. 463-6644 or www.HofstraTickets.com.

Kiss Me Kate

Cole Porter's musical version of "The Taming of the Shrew," Saturday, Nov. 11, 8 p.m.; Sunday, Nov. 12, 2:30 p.m. \$20 students, \$15 youth 12 and under, \$29 at door. BroadHollow Theatre, 700 Hempstead Tpke., Elmont. (631) 581-2700 or www.broadhollow.org.



Livingston Taylor

The folk singer-songwriter is joined by Tom Chapin and female folk group EVA, Saturday, Nov. 11, 8 p.m. \$35-\$45. Madison Theatre, Molloy College, 1000 Hempstead Ave., Rockville Centre. 323-4444 or www.madisontheatre.org.

Lucie Arnaz

The singer-actress in concert, in a tribute to the rhythm of her roots, Saturday Nov. 11, 2 p.m. \$45 and \$50. Adelphi University Performing Arts Center, 1 South Ave., Garden City. 877-4000 or aupac.adelphi.edu.

The Story of My Life

An original musical revue, hosted by Craig Field and Erica Iacono, with a cast of 35, presented by Long Island Cabaret Theatre, Saturday, Nov. 11, 7:30 p.m. \$22.

Temple B'nai Torah, 2900 Jerusalem Ave., Wantagh. 946-7207.

The Band of Long Island

A musical salute to veterans and the Armed Forces, featuring baritone Jason Whitfield, Sunday, Nov. 12, 2 p.m. Program includes patriotic songs, classic marches, Broadway showstoppers, and more. \$20, \$15 seniors and students. Jeanne Rimsky Theater at Landmark on Main Street, 232 Main St., Port Washington. 829-8709 or www.bandoflongisland.org.

Boyd Meets Girl

Australian classical guitarist Rupert Boyd and cellist Laura Metcalf in concert, Sunday, Nov. 12, 2:30 p.m. Tickets required. Hewlett-Woodmere Public Library, 1125 Broadway, Hewlett. 374-1967.

Brit Floyd

The popular Pink Floyd tribute band in concert, Sunday, Nov. 12, 7 p.m. \$79.50, \$59.50, \$49.59, \$49.50. The Paramount, 370 New York Ave., Huntington. (800) 745-3000 or www.ticketmaster.com or www.paramountry.com.

Nina et Cetera

The band in concert, with "The Warp and Weft of American Music," Sunday, Nov. 12, 2 p.m. Program highlights the rich diversity of American music, ranging from jazz, blues, gospel and folk to rock 'n roll. Oceanside Library, 30 Davison Ave., Oceanside. 766-2360.

Sheri Miller Sings

The popular indie folksinger in concert, Sunday, Nov. 12, 2 p.m. Rockville Centre Public Library, 221 N. Village Ave., Rockville Centre. 766-6257.

Our Generation

A musical tribute to the '60s and '70s, Sunday, Nov. 12, 2 p.m. Program includes

the Beatles, Temptations, Neil Diamond, Elvis, Four Seasons, and other hits. Tickets required. Franklin Square Public Library, 19 Lincoln Rd., Franklin Square. 488-3444.

King Crimson

The progressive rock legends in concert, Monday, Nov. 13, 8 p.m. \$124.50, \$99.50, \$79.50, \$49.50, \$39.50. The Paramount, 370 New York Ave., Huntington. (800) 745-3000 or www.ticketmaster.com or www.paramountry.com.



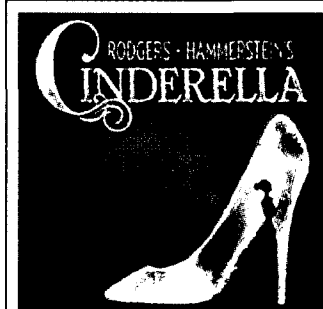
Culture Club

The iconic band in concert, Tuesday and Wednesday, Nov. 14-15, 8 p.m. \$199.50, \$124.50, \$109.50, \$69.50, \$59.50. The Paramount, 370 New York Ave., Huntington. (800) 745-3000 or www.ticketmaster.com or www.paramountry.com.

For the Kids

Willy Wonka

Road Dahl's timeless story of the candyman and his quest to find an heir comes to life, presented by Plaza Theatrical Productions, Friday and Saturday Nov. 10-11, 11 a.m.; Sunday, Nov. 12, 12 p.m. \$12 The Showplace at Bellmore Movies, 222 Pettit Ave., Bellmore. 599-6870 or www.plazatheatrical.com.



Cinderella

Follow Cinderella's adventures in a fast-paced musical production, Saturday, Nov. 11, 2 p.m. \$12. Merrick Theatre & Center for the Arts, 2222 Hewlett Ave., Merrick. 868-6400 or www.merrick-theatre.com.

Artful Adventures

Discuss and create art, in conjunction with Hofstra Museum's Andy Warhol exhibition, Saturday, Nov. 11, 11:30 a.m. Create abstract art using found objects in the style of contemporary artists. For ages 5-10. \$7, \$9 at door. Registration required. Emily Lowe Gallery, South Campus, Hempstead. 463-5672.

Celebration of A Wimpy Kid

Celebrate the latest Wimpy Kid book with games based on the book series, Monday, Nov. 13, 6:30 p.m. For grades 3-6. Registration required. Franklin Square Public Library, 19 Lincoln Rd., Franklin Square. 488-3444.

Game Night

Take part in a life-size version of the classic board game Sorry!, Monday, Nov.

13, 7-8:30 p.m. For grades 7-12. Merrick Library, 2279 Merrick Rd., Merrick. 377-6112.

Museums/Galleries and more...

Andy Warhol

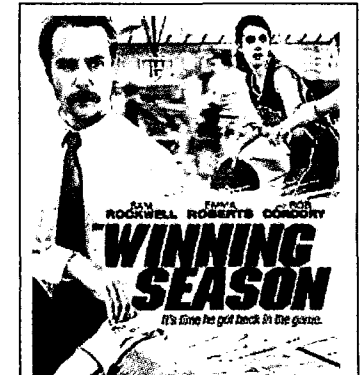
This original exhibition of works by pop artist Andy Warhol includes a selection of screenprints and photographs from the Hofstra University Museum collections. By juxtaposing his photographs with his screenprints, the exhibit contextualizes and reveals his working methods and artistic process. Through March 11. Hofstra University's David Filderman Gallery, Joan and Donald E. Axinn Library, South Campus, Hempstead. 463-5672 or www.hofstra.edu/museum.

Converging Voices: Gender and Identity

An original exhibition that focuses on issues of gender and identity, reflecting an international scope. Featured artists include Ghada Amer, Mariam Ghani, Martine Gutierrez, Guerrilla Girls, Yee I-Lann, Zanele Muholi, Pinaree Sanpitak, Carrie Mae Weems, and Philemona Williamson. Through Dec. 15. Hofstra University's Emily Lowe Gallery, Emily Lowe Hall, South Campus, Hempstead. 463-5672 or www.hofstra.edu/museum.

The Lockhorns Meet Howard Huge

An showcase of comic cartoons by Bill and Bunny Hoest. The bickering long-married Lockhors and their affable oversized pet are the stars of this exhibit, which honors the cartoonists' contributions to art and culture. Heckscher Museum of Art, Main St. and Prime Ave., Huntington. (631) 351-3250 or www.heckscher.org.



Afternoon Movie

See "The Winning Season," a comedy centered on a has-been coach who is given a shot at redemption when he's asked to run his local high school's girls basketball team, Friday, Nov. 10, 2:30 p.m.; also "Doc Hollywood," the dramedy about a young doctor, with Michael J. Fox, Tuesday, Nov. 14, 2:30 p.m. Elmont Memorial Library Theater, 700 Hempstead Tpke., Elmont. 354-5280.

On Screen

See "Baby Driver," the heist adventure that follows a young getaway driver who is coerced into working for a crime boss and finds himself taking part in a heist doomed to fail, Wednesday, Nov. 15, 2 and 7 p.m. Hewlett-Woodmere Public Library, 1125 Broadway, Hewlett. 374-1967.